



The Pipe Rack Suspended Scaffolding System

In modern industrial construction and maintenance, scaffolding serves as a crucial temporary support and working platform. The Pipe Rack Suspended Scaffolding System, as an innovative scaffolding solution, provides safe and efficient operation guarantees for complex construction scenarios and plays a significant role in industries such as petrochemical and energy.

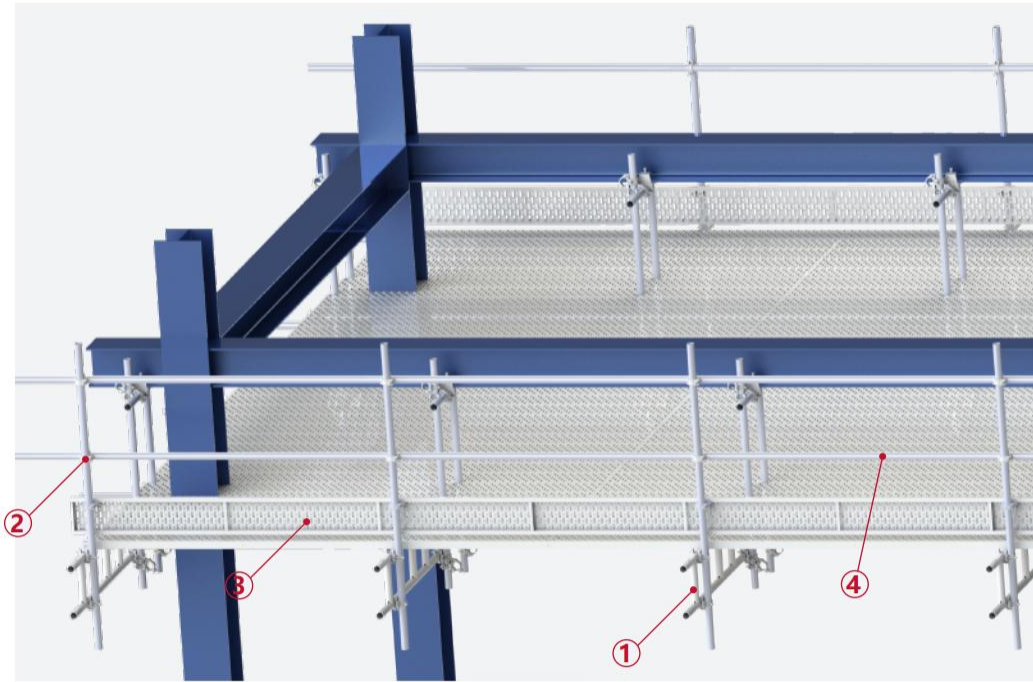
**SAFE AND EFFICIENT
OPERATION GUARANTEES**



System

This system is specifically designed for building working platforms in special environments. With its unique suspended structure, it can provide stable support in interbedded areas and high-altitude pipe racks that are difficult to access directly from the ground. It breaks through the limitations of traditional ground-supported scaffolding and expands the working space. Its design adheres to the concepts of safety, efficiency, and flexibility, applying advanced principles and technologies, and adopting a modular design for convenient installation and disassembly.

Structural Composition



Ladder Beam

1

Made of high - strength and high - toughness high - quality steel, it undergoes fine processing and has excellent load - bearing capacity and stability. It provides longitudinal support for the system and combines with other components to form a stable framework.

Connection Members

2

Including couplers, joints, etc., they are strictly designed, and their quality inspection complies with the EN 74 standard. They adopt advanced locking technology and are convenient for installation and disassembly.

Steel Scaffold Board

3

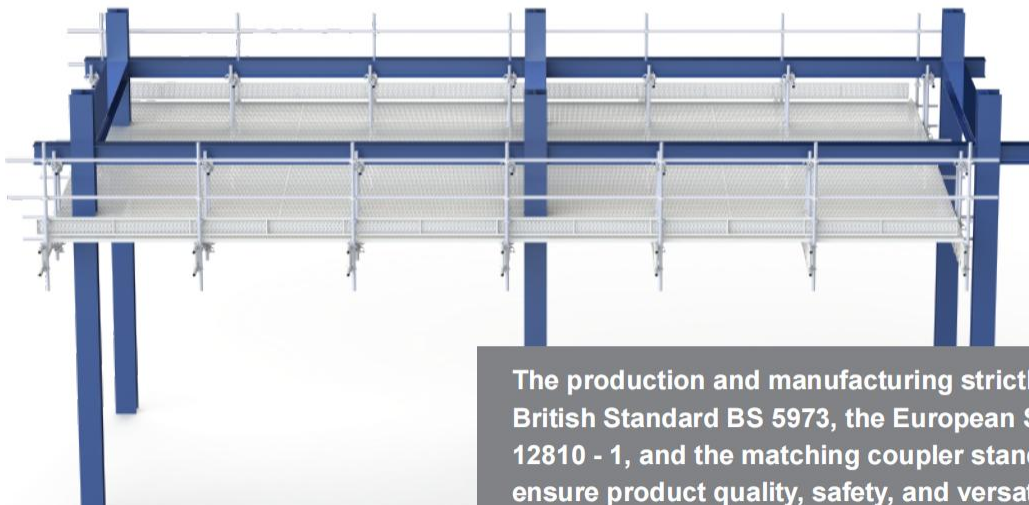
A patented product of WENMA, its patented cross - section design endows it with high load - bearing capacity. It can withstand greater loads without deformation, allows for a larger span, can reduce the number of intermediate support points, save the consumption of steel tubes and couplers, reduce costs, improve construction efficiency, and its sturdiness and durability ensure construction safety.

Scaffold Tube

4

High - quality European - standard steel tubes are selected, which have good strength and corrosion resistance. They are used to connect ladder beams and build the support structures of protective railings and scaffold boards. In special environments, they need to have fire - proof and explosion - proof properties.

The Pipe Rack Suspended Scaffolding System



The production and manufacturing strictly follow the British Standard BS 5973, the European Standard EN 12810 - 1, and the matching coupler standard EN 74 to ensure product quality, safety, and versatility.



Advantages and Characteristics

High Safety

Using high - strength materials and a reasonable structural design, it can withstand complex loads. It is equipped with protective facilities such as guardrails, scaffold boards, and safety nets. The connection couplers are of reliable quality, and the ladder beam provides a safe passage. It can also ensure a certain level of safety in the face of extreme conditions.

Flexibility

It can be flexibly built according to different environments and requirements. The components can be combined and adjusted in various ways to adapt to the construction of irregular areas and complex structures. The steel scaffold board can be adapted to different construction schemes.

Economy

Durability reduces equipment replacement costs. The universality and reusability of components reduce procurement costs. Efficient construction shortens the construction period, reducing labor and time costs. The steel scaffold board saves material costs and improves the overall economic efficiency.

High Efficiency

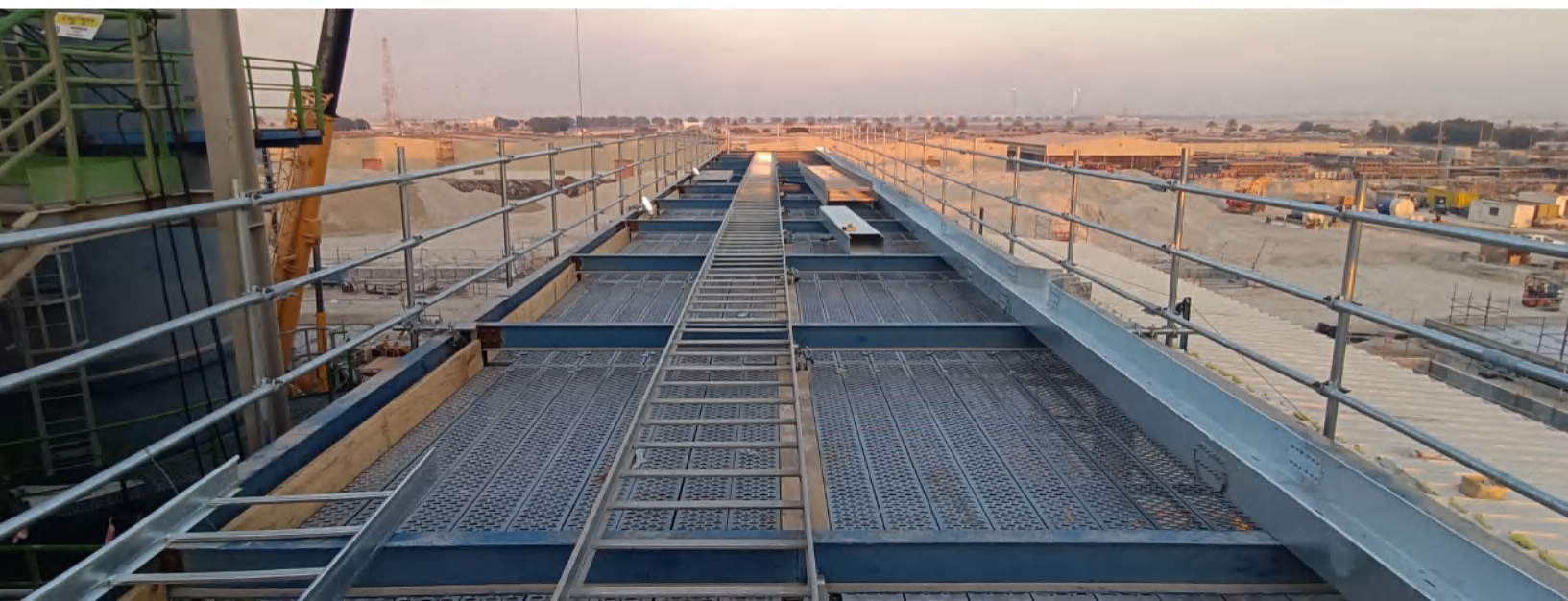
The modular design facilitates installation and disassembly, shortens the construction period. It can be directly suspended and built at high altitude, avoiding the complexity of ground construction. The components are highly versatile, and the steel scaffold plank reduces the support construction, improving construction efficiency.

Durability

With high - quality materials and advanced processes, the components are anti - corrosion treated, and the structure has fatigue resistance. It performs well in harsh environments. The steel scaffold board is durable, reducing the replacement frequency and lowering the use and maintenance costs.

Environmental Protection

It is reusable, reduces resource waste, has little impact on the surrounding environment during construction and use, and conforms to the concept of sustainable development.



Application Fields



Petrochemical Industry

Widely used in the construction, maintenance, and overhaul of pipe bridges. It does not affect ground traffic and production operations, provides a safe working platform for workers, and facilitates pipeline installation, welding, anti - corrosion, and other work.

Energy Industry

Plays an important role in the construction and maintenance of power plants and nuclear power plants. It can be flexibly built according to pipeline layouts and equipment positions to meet the installation and maintenance needs of high - altitude pipelines and equipment. It strictly follows safety standards to ensure safety.



Other Industrial Fields

Also applied in fields such as metallurgy, shipbuilding, and large - scale machinery manufacturing, used for equipment installation, debugging, and assembly.



Headquarter

Wenma Forming and Shoring Co., Ltd
E2-16, Binhai International Business Park
199 Haiyuan Road, Binhai New Area,
Tianjin 300451, P.R. of China
info@iwenma.cn www.iwenma.cn

Wenma Scaffolding Solutions Co., Ltd

E2-16, Binhai International Business Park
199 Haiyuan Road, Binhai New Area,
Tianjin 300451, P.R. of China
info@iwenma.com www.iwenma.com

Hong Kong, China

Wenma Scaffolding Solutions Hong Kong Limited
UNIT11, 16/F, METROPOLE SQUARE, NO. 2 ON
YIU STREET, SHATIN, N.T. HONG KONG
info@iwenma.com
www.iwenma.com

Hong Kong, China

Wenma Forming & Scaffolding (H.K.) Limited
UNIT11, 16/F, METROPOLE SQUARE, NO. 2 ON
YIU STREET, SHATIN, N.T. HONG KONG
+852-91999158 +852-23682855
info@iwenma.com hk@iwenma.com
www.iwenma.com

Qatar

Wenma Scaffolding Solutions and Services W.L.L.
Regus, Doha Bank Street, Office 201,
Blue Tower, Sword Signal, Bank Street
PO Box 55918, Doha, Qatar
info@iwenma.com www.iwenma.com

Saudi Arabia

Wenma Scaffolding Co., Ltd.
Building 4294, Al khaliq Rd, 7943 Az Zhuhur Dist, 32423
Office 12 Dammam city, Saudi Arabia
info@iwenma.com www.iwenma.com

Malaysia

Wenma Scaffolding Solutions And Services (M) SDN BHD
A-23-12 Menara The Met, Block A Level 23, Menara The
Met, No 20 Jalan Dutamas 2, 50480 Kuala Lumpur
info@iwenma.com www.iwenma.com