



鼎维固模架

Fineshore™ M60

Shoring System Catalogue

M60
方
鼎维固
股份有限公司

Fineshore M60 Shoring System

Wenma Forming and Shoring, Your Solution Partner

Wenma is a manufacturer, distributor, rental supplier and scaffolding contractor of high-quality scaffolding, shoring and formwork solutions. Our entire team is dedicated to understanding the needs and requirements of scaffolding and forming professionals in the construction, oil and gas, mining, shipbuilding, and other industries. This allows us to provide advice and expertise for every scaffolding and forming project worldwide and find the best solutions. This also includes professional training and technical engineering services as additional services.

Guided by the mission, with its innovative spirit and extensive experience, Wenma products are designed and built to keep scaffolders safe at all times. At the same time, our Finelock M48 System Scaffold and Fineshore M60 Shoring System are highly flexible, maintain the highest standards of durability and sustainability and are used by clients around the world for various projects.

For more information about Wenma, our products and services, please visit www.iwenma.com.



Technical Engineering Support, Whole Project Solutions

The engineering team at Wenma is happy to support you with several Scaffolding, forming and shoring and technical services to make your project successful including creating designs, drawings and static calculations, technical support whenever you need it, visits to your project site as well as the full planning of your project from start to end.

Interchangeable with most Finelock M48 components

Our engineers have adopted lightweight design in the product design, taking into consideration the compatibility with Finelock M48, and most of the components can be used interchangeably, thus reducing the difficulty of project management and enhancing your investment value.



Fineshore M60 Shoring System



Reduce Time and Save Man-hours

The optimized component system helps scaffolders carry less weight and reduce their operating movements, thus lowering their workload and improving efficiency.

Based on our statistics for many large infrastructure projects, the Fineshore M60 Shoring System can easily reduce the construction period by 2-3 times and save man-hours.

Hi-Load Capacity with Lighter Weight

By accurately balancing weight reduction and load bearing, the property of safe load capacity of 100KN per leg maximizes the functional diversity of the Fineshore M60 Shoring System, which can easily cope with various types of large-scale infrastructure projects and also meet the needs of various small-scale civil construction projects.



Fineshore M60 Shoring System



Shoring Tower or Large-Scale Structure

The design of the 8 directional holes on the rosette provides great convenience for assembling diagonal braces in different directions. The Fineshore M60 can be assembled into a shoring tower at will and can also be designed into a variety of complex shoring systems to cope with a variety of complex large-scale infrastructure structures.



Applied to various large-scale infrastructure projects

As a general forming and shoring system, it can be applied to various types of large-scale infrastructure projects, such as high-speed railway stations, airports, metro rail transit facilities, bridges and viaducts, large cultural and commercial complexes, large logistics centers, and large industrial plant complex facilities, etc.



Fineshore M60 Shoring System

CALB
中创新航

CALB Chengdu Lithium Battery
Industrial Complex



Color Revolution for Aluminum Beams

With our vast project application experiences of the Fineshore M60 Shoring System, we have specially re-designed the aluminum beam system. By painting the aluminum beams of different specifications and performance into different colors, it facilitates identification, greatly improved the project efficiency and safety on the site.

TCL 华星光电
CSOT

Guangzhou Optoelectronics Industrial Complex T9 Project



Fineshore M60 Shoring System



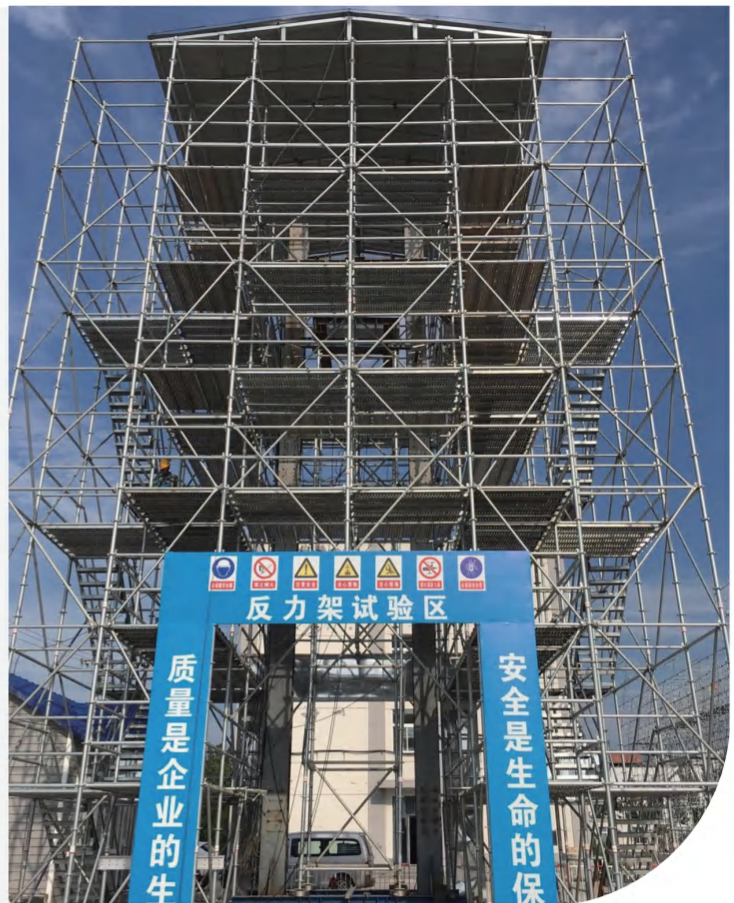
Trainings & Seminars Accredited by CISRS

The right planning, the correct handling, and the ability to know what to do in case of an emergency are equally important as high-quality scaffolding systems. That is why Wenma offers regular trainings as well as special trainings for scaffolders, engineers or your external partners. We are proud to have received CISRS accreditation for our training centers in China, which allows us to provide world-class scaffolding safety training to our clients and workers. Finelock M48 System Scaffold and Fineshore M60 Shoring System training course covered by CISRS and Simian Skills.



Independently Tested and Approved

Certificates and approvals from independent institutes help you to determine that a scaffold meets your standards of safety and quality. We always put the quality of our Scaffolding and Shoring systems first. Sourcing our raw materials only from trusted partners plays a big part in this, more importantly, continuous professional testing is required from raw materials to product performance to ensure that every Scaffolding and Shoring component meets quality standards. We have our own physical, chemical, and mechanical lab accredited by CNAS, meanwhile, our products are also certified and tested by independent institutions such as TUV, SGS and CIDB. In addition, we have regular audits carried out by independent third parties such as NASC - English National Access & Scaffolding Confederation.



Fineshore M60 Shoring System





High-Speed Railway Station Project



16. Aluminium Beam (H165)

Part No.	Weight (kg)	Packaging	
		QTY	Type
M60ALB47_165	17.86	108	Bundle
M60ALB26_165	9.88	108	Bundle
M60ALB22_165	8.32	108	Bundle

7. Vertical Bay Brace

Part No.	Weight (kg)	Packaging	
		QTY	Type
M60VBB2415	8.26	198	Rack
M60VBB2115	7.66	198	Rack
M60VBB1815	7.09	198	Rack
M60VBB1515	6.57	198	Rack
M60VBB1215	6.11	198	Rack
M60VBB0915	5.73	198	Rack
M60VBB0615	5.46	198	Rack

6. Horizontal Ledger

Part No.	Weight (kg)	Packaging	
		QTY	Type
M60HL30	10.20	247	Rack
M60HL24	8.26	247	Rack
M60HL21	7.28	247	Rack
M60HL18	6.31	247	Rack
M60HL15	5.34	247	Rack
M60HL12	4.36	247	Rack
M60HL09	3.39	238	Rack
M60HL06	2.42	380	Rack
M60HL03	1.45	600	Rack Bin

5. Base Collar (M60)

Part No.	Weight (kg)	Packaging	
		QTY	Type
M60BC	2.45	540	Rack



Component Identification



10. U-Head Jack (M60)

Part No.	Weight (kg)	Packaging	
		QTY	Type
M60AUH	5.60	240	Rack



2. Vertical Standard (M60) w/Spigot



Part No.	Weight (kg)	Packaging	
		QTY	Type
M60VS300S	17.78	90	Rack
M60VS200S	12.02	90	Rack
M60VS150S	9.14	90	Rack
M60VS100S	6.26	90	Rack
M60VS50S	3.38	270	Rack

25. Spigot (M60)



Part No.	Weight (kg)	Packaging	
		QTY	Type
M60S	0.45	700	Rack

1. Vertical Standard (M60)

Part No.	Weight (kg)	Packaging	
		QTY	Type
M60VS300	17.28	90	Rack
M60VS200	11.52	90	Rack
M60VS150	8.64	90	Rack
M60VS100	5.76	90	Rack
M60VS50	2.88	180	Rack



9. Base Jack (M60)

Part No.	Weight (kg)	Packaging	
		QTY	Type
M60ABJ	4.50	324	Rack



Component Identification



4. Vertical Standard (M60)

Part No.	Weight (kg)	Packaging	
		QTY	Type
M60AVS100SC	7.14	90	Rack



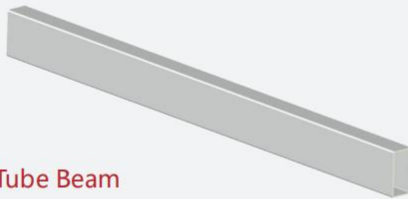
15. Double C-Channel Beam

Part No.	Weight (kg)	Packaging	
		QTY	Type
M60ADCB18	16.60	45	Bundle
M60ADCB15	14.11	45	Bundle



14. Double C-Channel Beam

Part No.	Weight (kg)	Packaging	
		QTY	Type
M60SDCB15	26.00	60	Bundle
M60SDCB12	21.80	60	Bundle



20. Jack Support



Part No.	Weight (kg)	Packaging	
		QTY	Type
M60JS	2.10	230	Rack Bin

18. Square Steel Tube Beam

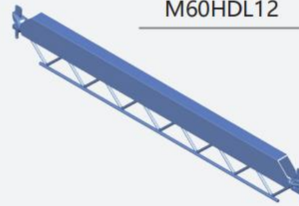
Part No.	Weight (kg)	Packaging	
		QTY	Type
M60STB470	31.87	40	Bundle
M60STB300	20.34	40	Bundle
M60STB240	16.27	40	Bundle
M60STB210	14.24	40	Bundle
M60STB200	13.56	40	Bundle
M60STB180	12.20	40	Bundle
M60STB120	8.14	40	Bundle
M60STB086	5.83	40	Bundle



Component Identification

8. Heavy Duty Ledger

Part No.	Weight (kg)	Packaging	
		QTY	Type
M60HDL18	14.75	108	Rack
M60HDL15	12.20	108	Rack
M60HDL12	7.84	108	Rack



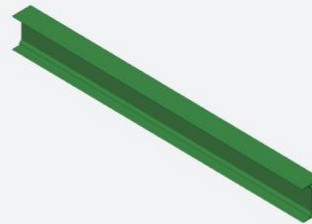
11. U-Head Jack, Multi-functional (M60)

Part No.	Weight (kg)	Packaging	
		QTY	Type
M60MHJ	13.11	100	Rack



17. Aluminium Beam (H100)

Part No.	Weight (kg)	Packaging	
		QTY	Type
M60ALB47_100	11.47	120	Bundle
M60ALB22_100	5.44	120	Bundle



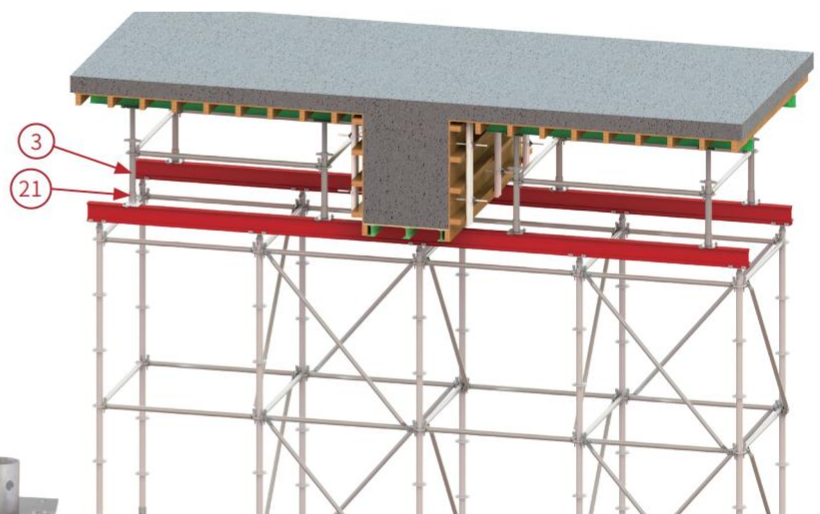
3. Vertical Standard (M60) w/ Collar

Part No.	Weight (kg)	Packaging	
		QTY	Type
M60VS50C	3.32	180	Rack Bin
M60VS25C	2.17	450	Rack Bin



21. Beam Anchoring Clamp

Part No.	Weight (kg)	Packaging	
		QTY	Type
M60BAC	1.46	500	Rack Bin

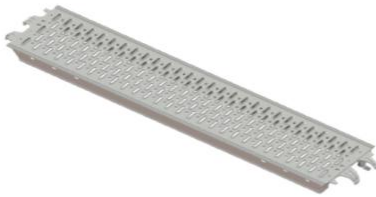
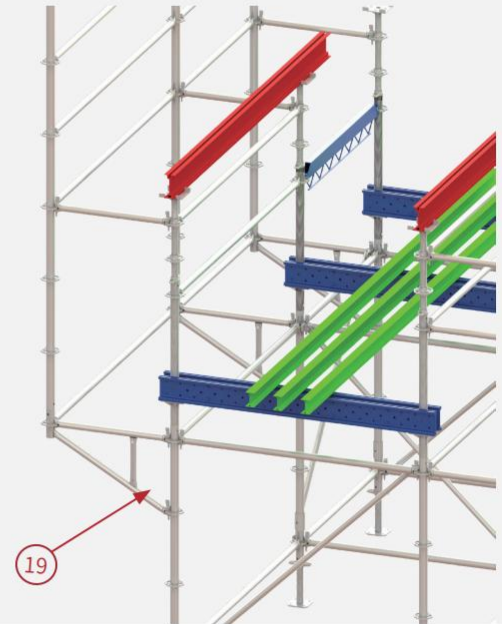


Component Identification



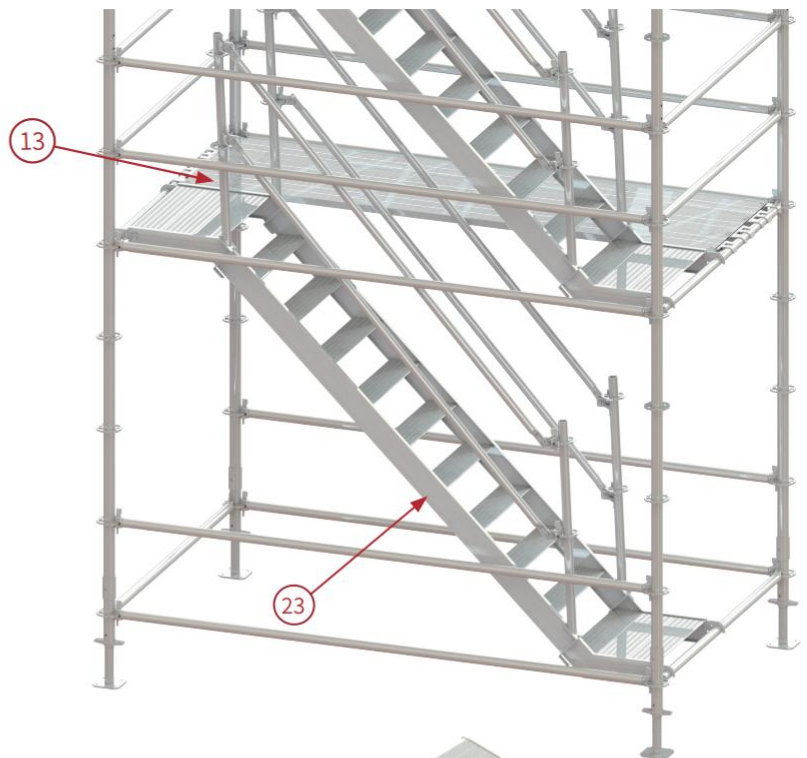
19. Side Bracket (M60)

Part No.	Weight (kg)	Packaging	
		QTY	Type
M60SB12	11.57	25	Rack Bin
M60SB09	7.76	40	Rack Bin
M60SB06	6.13	50	Rack Bin
M60SB03	4.00	100	Rack Bin



13. Steel WalkBoard

Part No.	Weight (kg)	Packaging	
		QTY	Type
M48SWB_30	18.90	65	Rack
M48SWB_24	15.27	65	Rack
M48SWB_21	13.55	65	Rack
M48SWB_18	11.72	65	Rack
M48SWB_15	9.92	65	Rack
M48SWB_12	8.17	65	Rack
M48SWB_09	6.45	65	Rack
M48SWB_06	4.81	65	Rack



23. Platform Stairway Aluminum

Part No.	Weight (kg)	Packaging	
		QTY	Type
M48PSW3020_AL750	33.47	6	Rack
M48PSW2420_AL750	29.11	6	Rack

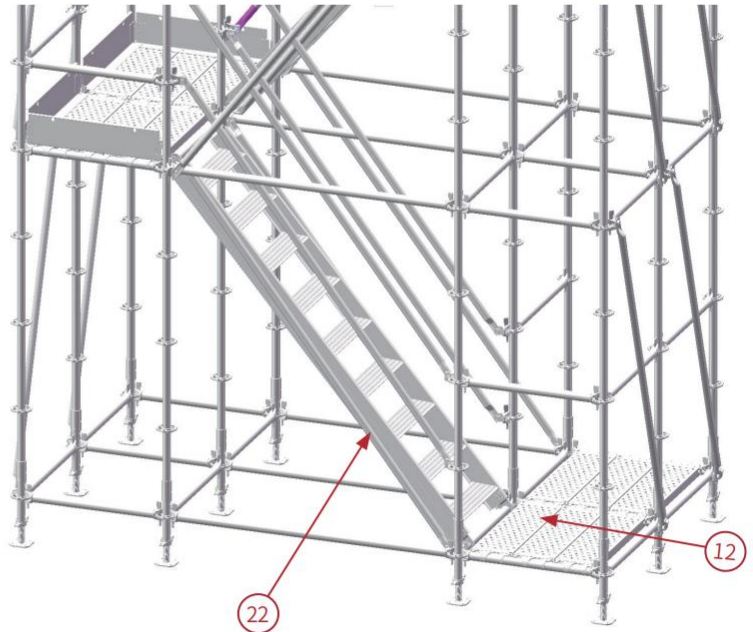


Component Identification



12. Steel Plank

Part No.	Weight (kg)	Packaging	
		QTY	Type
M48SP_30	17.72	72	Rack
M48SP_24	14.42	72	Rack
M48SP_21	12.76	72	Rack
M48SP_18	11.11	72	Rack
M48SP_15	9.46	72	Rack
M48SP_12	7.80	72	Rack
M48SP_09	6.15	72	Rack
M48SP_06	4.50	72	Rack



22. Stairway Aluminum

Part No.	Weight (kg)	Packaging	
		QTY	Type
M60SW2420_AL650	22.59	8	Rack
M60SW2420_AL650	22.68	8	Rack
M60SW2420_AL650	20.84	8	Rack

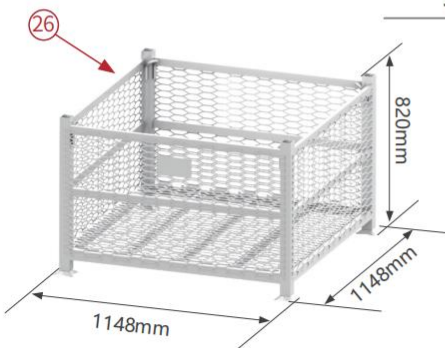
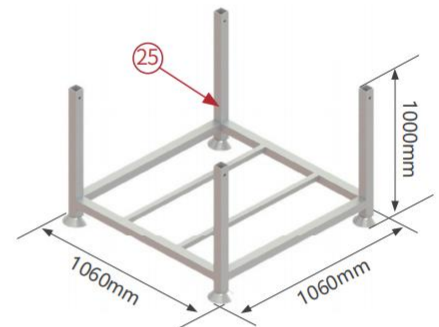


24. Aluminum Scaffolders Step

Part No.	Weight (kg)	Packaging	
		QTY	Type
M48ASS	5.94	18	Rack

25. Scaffold Rack

Part No.	Weight (kg)	Packaging	
		QTY	Type
SR	87.00	/	/



26. Scaffold Rack Bin

Part No.	Weight (kg)	Packaging	
		QTY	Type
SRB	48.5	/	/

Racking & Packing

Safety Warning

- Unqualified racks and improper stacking methods can lead to cargo overturning, causing serious safety accidents.
- The Wenma racks have been professionally designed and rigorously calculated to ensure safe stacking of up to 5 layers. It is strictly prohibited to exceed 5 layers to prevent structural instability and potential safety hazards.
- All the illustrations, dimensions, and weights provided below are for reference in planning the transportation and handling processes. For detailed racking and packing methods and specifications, please refer to the following documents:
 - Finelock M48 System Scaffold Racking and Packing Instruction
 - Fineshore M60 Shoring System Racking and Packing Instruction
- If you have any questions, please do not hesitate to contact us immediately.

Racking & Packing

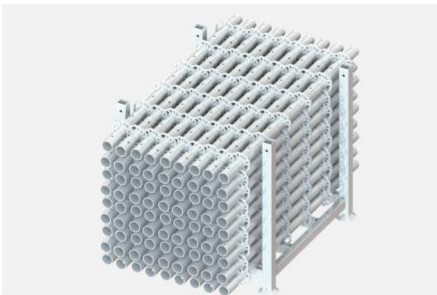
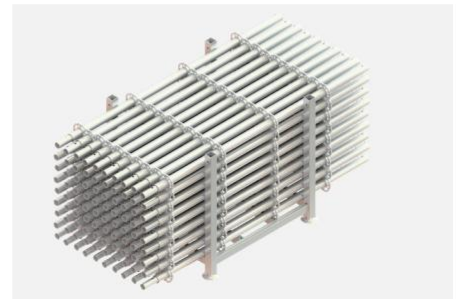
Vertical Standard (M60)

Part No.	Fineshore M60 Components			Total Weight w/ Rack	Racking Dimension mm
	Weight (kg)	QTY/Rack (pcs)	Total weight (kg)		
M60VS300	17.28	81	1399.68	1448.18	3000x1060x1000
M60VS200	11.52	81	933.12	981.62	2000x1060x1000
M60VS150	8.64	81	699.84	748.34	1500x1060x1000
M60VS100	5.76	81	466.56	550.56	2000x1060x1000
M60VS50	2.88	324	933.12	981.62	2000x1060x1000



Vertical Standard (M60,) w/ Spigot

Part No.	Fineshore M60 Components			Total Weight w/ Rack	Racking Dimension mm
	Weight (kg)	QTY/Rack (pcs)	Total weight (kg)		
M60VS300S	17.78	81	1440.18	1488.68	3130x1060x1000
M60VS200S	12.02	81	973.62	1022.12	2130x1060x1000
M60VS150S	9.14	81	740.34	788.84	1630x1060x1000
M60VS100S	6.26	162	1014.12	1062.62	2130x1060x1000
M60VS50S	3.38	324	1095.12	1143.62	2130x1060x1000
M60VS50C	3.32	324	1075.68	1124.18	2130x1060x1000
M60VS25C	2.17	280	607.60	691.60	1148x1148x820
M60AVS100SC	6.44	81	521.64	605.64	1130x1060x1000



Base Collar (M60)

Part No.	Fineshore M60 Components			Total Weight w/ Rack	Racking Dimension mm
	Weight (kg)	QTY/Rack (pcs)	Total weight (kg)		
M60BC	2.45	246	602.70	686.70	1148x1148x820

Horizontal Ledger

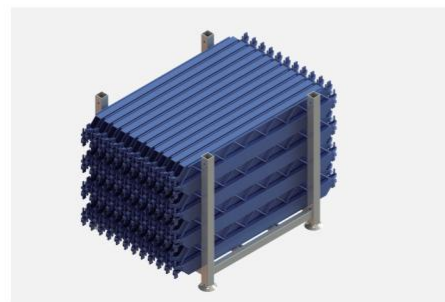
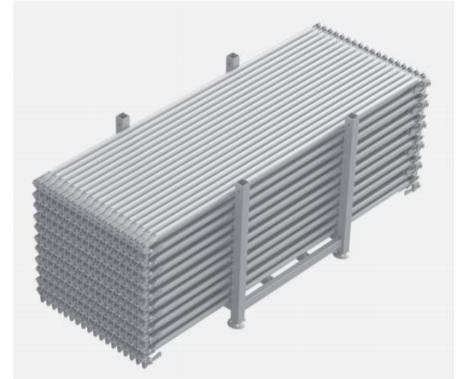


Part No.	Fineshore M60 Components			Total Weight w/ Rack	Racking Dimension mm
	Weight (kg)	QTY/Rack (pcs)	Total weight (kg)		
M60HL30	10.20	247	2,519.40	2567.90	2950x1060x1000
M60HL24	8.26	247	2,040.22	2088.72	2350x1060x1000
M60HL21	7.28	247	1,798.16	1846.66	2050x1060x1000
M60HL18	6.31	247	1,558.57	1607.07	1750x1060x1000
M60HL15	5.34	247	1,318.98	1367.48	1450x1060x1000
M60HL12	4.36	247	1,076.92	1125.42	1150x1060x1000
M60HL09	3.39	238	806.82	855.32	1060x1060x1000
M60HL06	2.42	512	1239.04	1287.54	1148x1148x820
M60HL03	1.45	600	870.00	954.00	1148x1148x820

Racking & Packing

Vertical Bay Brace

Part No.	Fineshore M60 Components			Total Weight w/ Rack	Racking Dimension mm
	Weight (kg)	QTY/Rack (pcs)	Total weight (kg)		
M60VBB2415	8.26	198	1635.48	1683.98	2730x1060x1000
M60VBB2115	7.66	198	1516.68	1565.18	2490x1060x1000
M60VBB1815	7.09	198	1403.82	1452.32	2260x1060x1000
M60VBB1515	6.57	198	1300.86	1349.36	2050x1060x1000
M60VBB1215	6.11	198	1209.78	1258.28	1860x1060x1000
M60VBB0915	5.73	198	1134.54	1183.04	1710x1060x1000
M60VBB0615	5.46	198	1081.08	1129.58	1600x1060x1000



Heavy Duty Ledger

Part No.	Fineshore M60 Components			Total Weight w/ Rack	Racking Dimension mm
	Weight (kg)	QTY/Rack (pcs)	Total weight (kg)		
M60HDL18	14.75	88	1298.00	1346.50	3130x1060x1000
M60HDL15	12.20	88	1073.60	1122.10	2130x1060x1000
M60HDL12	7.84	88	689.92	738.42	1630x1060x1000

Base Jack (M60)

Part No.	Fineshore M60 Components			Total Weight w/ Rack	Racking Dimension mm
	Weight (kg)	QTY/Rack (pcs)	Total weight (kg)		
M60ABJ	4.50	270	1215.00	1263.50	1060x1060x1000



U-Head Jack (M60)

Part No.	Fineshore M60 Components			Total Weight w/ Rack	Racking Dimension mm
	Weight (kg)	QTY/Rack (pcs)	Total weight (kg)		
M60AUH	5.60	180	1008.00	1092.00	1200x1200x1000
M60MHJ	13.11	100	1311.00	1359.50	1700x1060x1000

Racking & Packing

Steel Plank

Part No.	Fineshore M60 Components			Total Weight w/ Rack	Racking Dimension mm
	Weight (kg)	QTY/Rack (pcs)	Total weight (kg)		
M48SP_30	17.72	72	1275.84	1324.34	3060x1060x1000
M48SP_24	14.42	72	1038.24	1086.74	2460x1060x1000
M48SP_21	12.76	72	918.72	967.22	2160x1060x1000
M48SP_18	11.11	72	799.92	848.42	1860x1060x1000
M48SP_15	9.46	72	681.12	729.62	1560x1060x1000
M48SP_12	7.80	72	561.60	610.10	1260x1060x1000
M48SP_09	6.15	72	442.80	491.30	1060x1060x1000
M48SP_06	4.50	72	324.00	372.50	1060x1060x1000

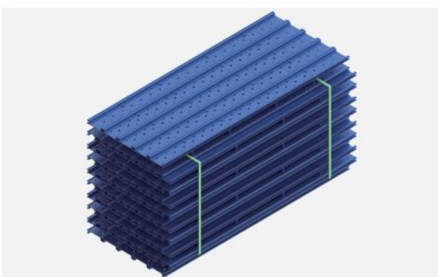


Steel Walkboard

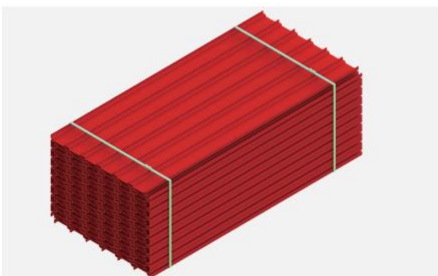
Part No.	Fineshore M60 Components			Total Weight w/ Rack	Racking Dimension mm
	Weight (kg)	QTY/Rack (pcs)	Total weight (kg)		
M48SWB_30	18.90	65	1228.50	1277.00	3060x1060x1000
M48SWB_24	15.27	65	992.55	1041.05	2460x1060x1000
M48SWB_21	13.55	65	880.75	929.25	2160x1060x1000
M48SWB_18	11.72	65	761.80	810.30	1860x1060x1000
M48SWB_15	9.92	65	644.80	693.30	1560x1060x1000
M48SWB_12	8.17	65	531.05	579.55	1260x1060x1000
M48SWB_09	6.45	65	419.25	467.75	1060x1060x1000
M48SWB_06	4.81	65	312.65	361.15	1060x1060x1000



Double C-Channel Beam



Part No.	Fineshore M60 Components			Total Weight w/ Rack	Racking Dimension mm
	Weight (kg)	QTY/Rack (pcs)	Total weight (kg)		
M60SDCB15	26.00	70	1820.00	1904.00	1650x1000x720
M60SDCB12	21.80	70	1526.00	1610.00	1350x1000x720
M60ADCB18	16.60	45	747.00	747.00	2000x1060x1050
M60ADCB15	14.11	45	634.95	634.95	1700x1060x1050



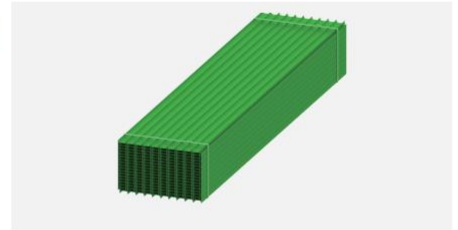
Aluminium Beam

Part No.	Fineshore M60 Components			Total Weight w/ Rack	Racking Dimension mm
	Weight (kg)	QTY/Rack (pcs)	Total weight (kg)		
M60ALB47_165	17.86	108	1928.88	1928.88	4700x1060x760
M60ALB26_165	9.88	108	1067.04	1067.04	2600x1060x760
M60ALB22_165	8.32	108	898.56	898.56	2200x1060x760

Racking & Packing

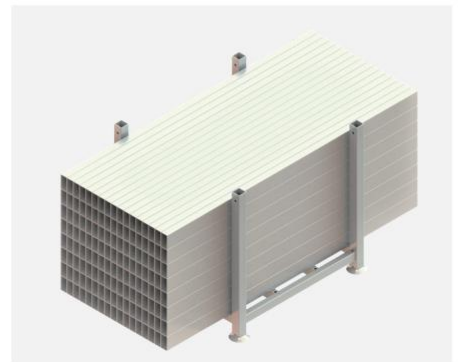
Aluminium Beam

Part No.	Fineshore M60 Components			Total Weight w/ Rack	Racking Dimension mm
	Weight (kg)	QTY/Rack (pcs)	Total weight (kg)		
M60ALB47_100	11.47	120	1376.4	1376.4	4700x1060x450
M60ALB22_100	5.44	120	652.8	652.8	2200x1060x450



Square Steel Tube Beam

Part No.	Fineshore M60 Components			Total Weight w/ Rack	Racking Dimension mm
	Weight (kg)	QTY/Rack (pcs)	Total weight (kg)		
M60STB470	31.87	40	1274.8	1274.8	4700x500x400
M60STB300	20.34	136	2766.24	2814.74	3000x1060x1000
M60STB240	16.27	136	2212.72	2261.22	2400x1060x1000
M60STB210	14.24	136	1936.64	1985.14	2100x1060x1000
M60STB200	13.56	136	1844.16	1892.66	2000x1060x1000
M60STB180	12.20	136	1659.2	1707.7	1800x1060x1000
M60STB120	8.14	136	1107.04	1155.54	1200x1060x1000
M60STB086	5.83	272	1585.76	1634.26	1060x1060x1000



Side Bracket (M60)

Part No.	Fineshore M60 Components			Total Weight w/ Rack	Racking Dimension mm
	Weight (kg)	QTY/Rack (pcs)	Total weight (kg)		
M60SB12	11.57	25	289.25	373.25	1148x1148x820
M60SB09	7.76	40	310.40	394.40	1148x1148x820
M60SB06	6.13	63	386.19	470.19	1148x1148x820
M60SB03	4.00	100	400.00	484.00	1148x1148x820



Jack Support

Part No.	Fineshore M60 Components			Total Weight w/ Rack	Racking Dimension mm
	Weight (kg)	QTY/Rack (pcs)	Total weight (kg)		
M60JS	2.10	230	483.00	567.00	1148x1148x820

Racking & Packing

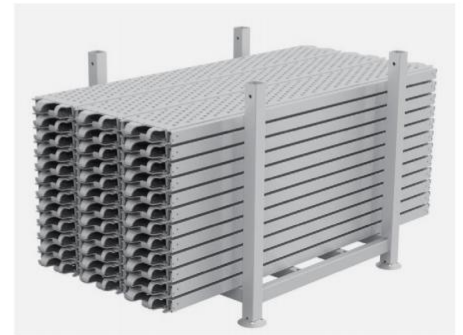


■ Beam Anchoring Clamp

Part No.	Fineshore M60 Components			Total Weight w/ Rack	Racking Dimension mm
	Weight (kg)	QTY/Rack (pcs)	Total weight (kg)		
M60BAC	1.46	500	730.00	814.00	1148x1148x820

■ Stairway Aluminum

Part No.	Fineshore M60 Components			Total Weight w/ Rack	Racking Dimension mm
	Weight (kg)	QTY/Rack (pcs)	Total weight (kg)		
M60SW2420_AL650	22.59	8	180.72	229.22	3210x1060x1000
M60SW2120_AL650	22.68	8	181.44	229.94	2980x1060x1000
M60SW1820_AL650	20.84	8	166.72	215.22	2780x1060x1000



■ Platform Stairway Aluminum

Part No.	Fineshore M60 Components			Total Weight w/ Rack	Racking Dimension mm
	Weight (kg)	QTY/Rack (pcs)	Total weight (kg)		
M48PSW3020_AL750	33.47	6	200.82	249.32	3690x1060x1000
M48PSW2420_AL750	29.11	6	174.66	223.16	3200x1060x1000



■ Aluminum Scaffolders Step

Part No.	Fineshore M60 Components			Total Weight w/ Rack	Racking Dimension mm
	Weight (kg)	QTY/Rack (pcs)	Total weight (kg)		
M48ASS	5.94	18	106.92	155.42	1060x1060x1000



■ Spigot (M60)

Part No.	Fineshore M60 Components			Total Weight w/ Rack	Racking Dimension mm
	Weight (kg)	QTY/Rack (pcs)	Total weight (kg)		
M60S	0.45	700	315.00	399.00	1148x1148x820



Prologis Nanjing Liuhe Logistics Center





Xiamen Tianma 6th Generation AMOLED Production Line



V01-092024

Headquarter

Wenma Forming and Shoring Co., Ltd.
E2-16, Binhai International Business Park
199 Haiyuan Road, Binhai New Area,
Tianjin 300451, P.R. of China
+86-22-25646163
info@iwenma.cn
www.iwenma.cn

Wenma Scaffolding Solutions Co., Ltd.
E2-16, Binhai International Business Park,
199 Haiyuan Road, Binhai New Area, Tianjin
300451, P.R. of China
+86-22-25646163
info@iwenma.com
www.iwenma.com

Hong Kong, China

Wenma Scaffolding Solutions Hong Kong Limited
Room 06, 13A/F., South Tower, World Finance Centre,
Harbor City, 17 Canton Road, Tsim Sha Tsui, Kowloon,
Hong Kong
info@iwenma.com
www.iwenma.com

Hong Kong, China

Wenma Forming & Scaffolding (H.K.) Limited
UNIT11, 16/F, METROPOLE SQUARE, NO. 2 ON YIU
STREET, SHATIN, N.T. HONG KONG
+852-91999158
info@iwenma.com
www.iwenma.com

Qatar

Wenma Scaffolding Solutions and Services W.L.L.
Regus, Doha Bank Street, Office 201,
Blue Tower, Sword Signal, Bank Street
PO Box 55918, Doha, Qatar
info@iwenma.com www.iwenma.com

Saudi Arabia

Wenma Scaffolding Co., Ltd.
Building 4294, Al khaliq Rd, 7943 Az Zhuhur Dist.,
32423 Office 12 Dammam city, Saudi Arabia
info@iwenma.com www.iwenma.com

Malaysia

Wenma Scaffolding Solutions And Services (M) SDN BHD
A-23-12, The MET Corporate Towers, 20 Jalan
Dutamas 250480 Kuala Lumpur, Malaysia
info@iwenma.com www.iwenma.com