



**To Support
a Better World
Build a Happy Life**

13 1

Company Profile

Foreword

Your Scaffolding & Shoring Comprehensive Solutions Partner

Wenma is a manufacturer, distributor, rental supplier and scaffolding contractor of high-quality scaffolding solutions. Our entire team is dedicated to understanding the needs and requirements of scaffolding professionals in the construction, oil and gas, mining, shipbuilding, and other industries. This allows us to provide advice and expertise for every scaffolding project worldwide and find the best solutions. This also includes professional training and technical engineering services as additional services.

Safety First

At Wenma, health and safety are not just a priority, or just talk, but a value, the reason why the company was founded. From quality control of each component of equipment to project management on every site, together with our employees and business partners, we strive to achieve the highest safety standards and world-class best practices. In order to do so, we...

- Introduced TG20 guidance for scaffolding from NASC UK into the worksites in China.
- Established the first and the only accredited CISRS training center in China.
- Founded Professional & Occupational Training & Assessment Committee (POTAC) under China Construction Material Rental Contractor Association (CMRA) to train the whole industry.
- Established a comprehensive safety management system for scaffolding construction, including product R&D, manufacturing, project engineering and planning, labor training, and construction process control.

Contents

01 About Us / 02

- Our Mission
- Our History
- Management Team
- Certification & Award

02 Our Services / 12

- What We Do
- Who We Serve
- Where We Go
- Why choose Us
- Solution Contractor
- Integrated Capability
- Our Partners

03 Products / 20

- Finelock M48 Scaffold
- Fineshore M60 Shoring
- Excellence By Design
- Quality By Know-How
- Innovation By Professional
- Project Cases

04 QHSE / 33

- CISRS Training Center
- Safety Advisory Board
- Three Golden Rules
- Ten Safety Philosophy
- Wenma HSE Policy

Our Passion

We Start From Our Passion

When Wenma Forming & Shoring Co., Ltd was founded in 2012, our founders were crystal clear about the company's mission. It's not just about innovating scaffolding technology or products; it's also about improving the way of living of those people who work amidst these massive steel structures. Our goal is to build a better world by building safe, healthy, and eco-friendly working environments for both our clients and workers.

Mission

Support a Better World Build a Happy Life

Devote to one-stop contracting services of scaffolding, forming and shoring projects, with the spirit of innovation, cutting-edge technology, scientific management, to create a healthy, safe and environmentally friendly working environment, build a harmonious industrial ecological chain, to achieve a dignified and happy life.

Vision

To be a World-Class Scaffolding Forming and Shoring Expert

With lean and enterprising spirit, establish a world-class professional, efficient and active organization, lead the innovation of industry, to become a more global-influenced scaffolding, forming and shoring company.



Guangzhou Optoelectronics Industrial Complex T9 Project





Toolbox Meeting

The World's Largest Single Electronic Factory Project

Xiamen Tianma 6th Generation AMOLED Production Line



Core Values

■ Client Foremost

Client is the cornerstone of the enterprise, is the lifeblood of the survival of the enterprise. Always see our business through the eyes of our clients. Meet client needs, create value for clients and help clients succeed. Whatever clients see, think, believe and aspire to is always regarded as objective facts and taken seriously.

■ Human Centered

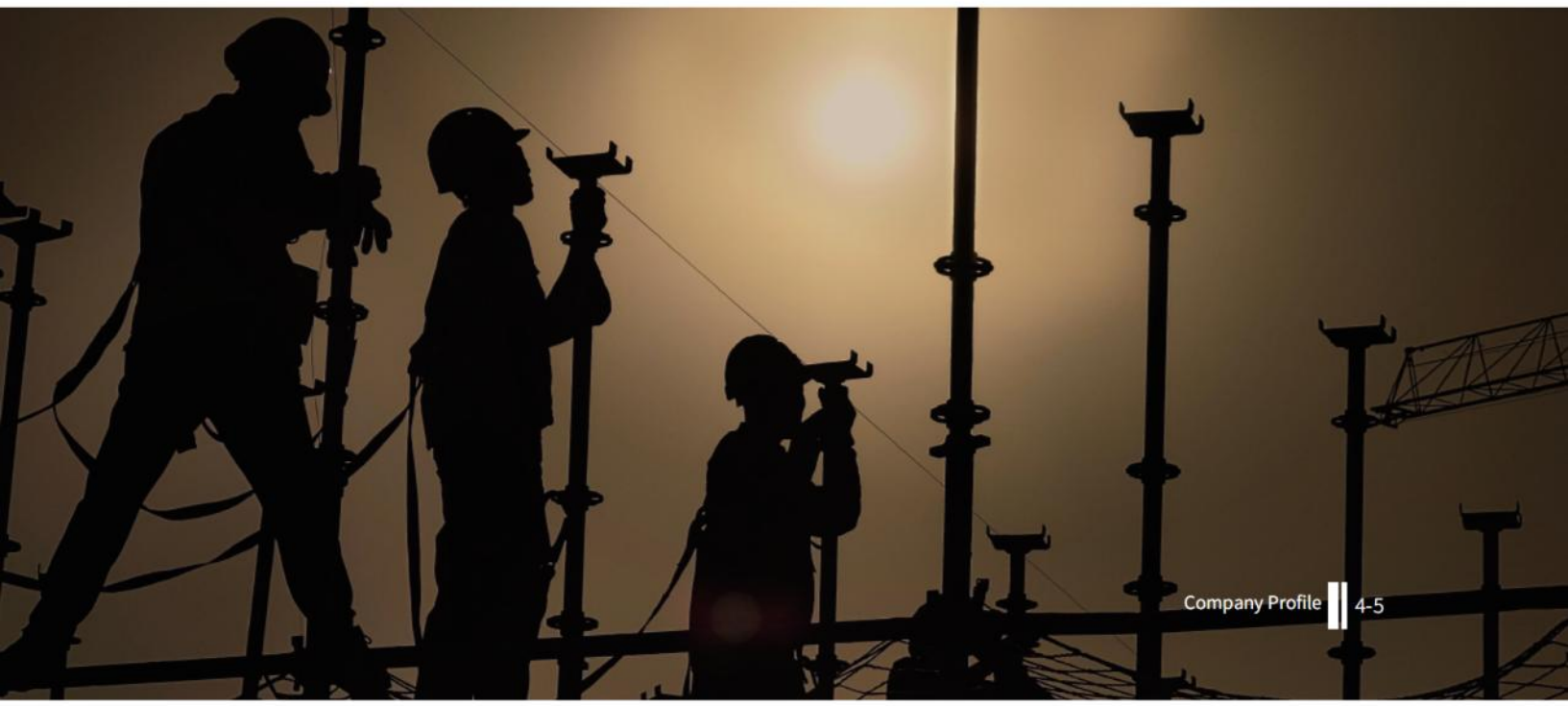
To make workers in our industry the way of living better is the ultimate mission of enterprise existence and wealth creation. Regard people as the most valuable resource in all the resources of the enterprise, as the capital of the long-term development of the enterprise and the active force to promote the healthy growth of the enterprise. Provide fair development opportunities for employees, and deliver business results by helping employees achieve greater life value in the enterprise. Treat people as people, tilt to value contributors, and don't let contributors suffer losses.

■ Devotion and Ultimate

Perfection comes from devotion. With the spirit of perseverance, deep digging and fine ploughing to get to the bottom of the problems encountered. With a minimalist attitude, go all out, and never give up until things done to perfection.

■ Be Practical and Realistic

Seek true knowledge based on true evidence. Act in accordance with the actual situation, do not exaggerate, do not reduce, do not distort. Yes is yes, no is no.



Our History

Cultivating Market 2011-2015

As an advocate of world-class safety culture and the "C+EEC" business model, we started to provide integrated solutions for China's infrastructure projects. Clients have never enjoyed such advanced equipment and services, have saved cost and time, enhanced the safety.

Forge Ahead 2015-2018

We have completed more and more large-scale infrastructure projects such as airports, railway stations, bridges, commercial complexes and established strategic partnerships with most first-tier general contractors. At the same time, our team and capacity have grown rapidly.

Rapid Growth 2018-2022

In the past 5 years, China has built the world's largest number of large-scale industrial plant projects such as logistics centers, electronics, green energy, semiconductors, etc. Large investment and tight timing need us and our services for extreme high level of safety and efficiency.

Go International Industrial Project

Since 2023 we have developed a new five-year plan and established new business divisions to expand our service area to petrochemical, oil and gas projects in Middle Eastern countries and construction projects in Southeast Asian countries.

CALB Xiamen Phase II Project Lithium Battery Industrial Complex



CALB
中创新航



Safety Talk



Management Team

Leadership does not make A difference, it makes The difference. Leadership Changes the way of life in the industry by Innovation & know-how. We are committed to achieving not only commercial success, but also to promoting a world-class safety culture in the scaffolding industry. Never lost sight of our mission. The Wenma management team has been leading the industry's change since the company was established.



Howard Liu
Chairman of the Board



Wenma Zhang
Chief Executive Officer



Jack Wei
Chief Technology Officer



Glenn Guo
Industrial BG Managing Director



Zhaoming Tang
Construction BG Managing Director



Chao Gao
PMO Operation Officer



Scaffolding Project in Chemical, Oil & Gas Industry



Certification & Award



Professionalism Leads to Success

To be a World-Class Scaffolding, Forming and Shoring Expert. Support a Better World, Build a Happy Life. Our vision and mission guide us to consistently build professional execution capabilities to world-class standards.



ISO45001: 2018

ISO45001: 2018 Certified Organization



ISO14001: 2015

ISO14001: 2015 Certified Organization



ISO9001: 2015

ISO9001: 2015 Certified Organization



ILAC-MRA CNAS Accreditation
Accredited Test Laboratory



NASC Membership
To be proud of NASC Member



CISRS Accreditation
Scaffolding Safety Training Center

What We Do

WHAT CLIENTS NEED IS WHAT WE OFFER

What the general contractor needs is not just a great scaffolding product, but a solution that ensures its project success; they need close communication with the scaffolding supplier and professional support when faced with challenges in their daily work; they need a professional team like Wenma to support them with experience in R&D, manufacturing, sales, rental, and project contracting.



Equipment Hire

Our warehouses are located close to client projects for quick response and savings in shipping costs.

Sales and Buy-Back

Sales and buyback guarantee to help general contractors balance their project budget and save cost.

Scaffold Contracting

Let Wenma bring its equipment, scaffolders, engineers and expertise to provide you with total solutions.

Project Design & Planning

Whether you buy, hire from us or subcontract to us, our specialist engineering team is always with you.

Scaffold Safety Training

We offer CISRS certified safety training for scaffolders, as well as training in scaffold inspection and supervision.

Consultation & Inspection

We are always ready to share our knowledge and expertise in the scaffolding industry with our clients.

Start from China, Go abroad along the Belt and Road, Serve the whole World

Who We Serve

NO MATTER HOW LARGE INFRASTRUCTURE FORMING AND SHORING PROJECTS

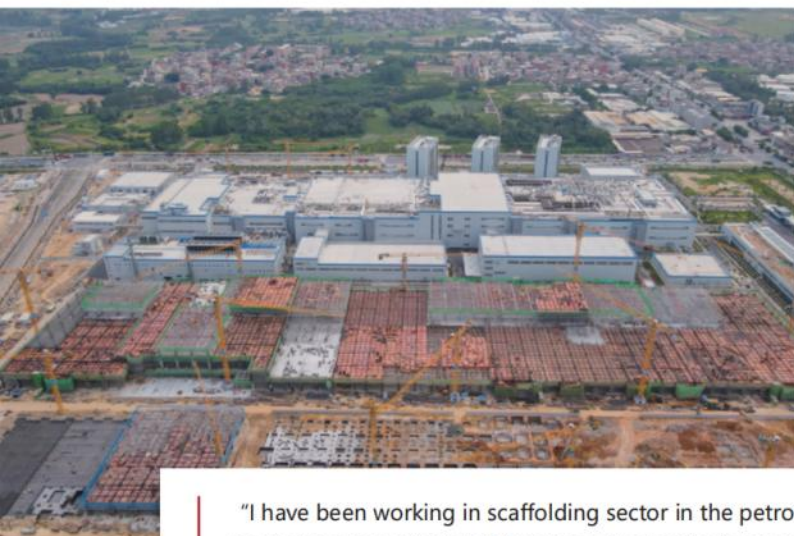
What is the ultimate need that a large infrastructure project manager wants from a scaffolding, forming and shoring supplier? Someone can come to the site with their scaffolding equipment, workers, engineering and project management team, and quickly erect it when it's needed and remove it when it's not, and they can save from equipment and labor cost with safety and efficiency. This is what Wenma offers to its clients.

Starting from the needs of clients, with the innovative "C+EEC" business model, we started the journey of providing clients with comprehensive solutions and have grown to become the largest scaffolding, forming and shoring subcontractor in China.

NO MATTER LARGE OR SMALL INDUSTRIAL SCAFFOLDING PROJECTS

Petrochemical, oil and gas, industrial module and shipbuilding industry projects have long periods, scattered work areas, and difficult safety management of equipment and workers. Taking into account the high safety requirements for industrial projects, Wenma has cooperated with the CISRS, the UK Construction Industry Scaffolders Record Scheme, to train a large number of internationally standard scaffolders and scaffolding supervisors through its certified training centers.

Wenma's "C+EEC" business model greatly meets the needs of clients, improves the safety and efficiency of construction, and has been highly recognized by clients. We have set up a professional team, dedicated to provide high-quality services for clients in China and abroad.



"I have been working in scaffolding sector in the petrochemical industry for over 20 years, serving well-known petrochemical companies abroad. At Wenma, I hope to serve more clients with my knowledge in scaffolding safety."

Glenn Guo: Safety Director/Industrial BG Managing Director

Where We Go

**LARGEST SCAFFOLD
CONTRACTOR IN CHINA**

**PROJECTS AND WAREHOUSES
ACROSS 27 PROVINCES**

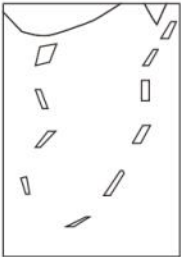
Never in the whole of human history has a country modernized so rapidly and at such a scale as China, built so many bridges, railway and subway stations, airports, logistics centers, data centers, large commercial complexes, and large industrial facilities in the last 20 years. China's shipbuilding industry has become the world's largest. More and more petrochemical, oil and gas projects are under construction.

Wenma is very fortunate to be part of it and has the opportunity to grow together into the largest scaffolding, forming and shoring sub-contractor in China.

"Over the past decade, we have been involved in building almost all major projects in China, and have changed the scaffolding industry with innovative products, safety, and efficiency."

Zhaoming Tang

Marketing Director Construction BG Managing Director



360⁺

Completed Projects

60⁺

Happy Clients

220⁺

Professionals

150⁺

Awards Winning

Go along with B and R

Serve the whole World

Wenma grew up in China's vast market, but never lost sight of our mission and vision. We have developed a new five-year plan and established new business divisions to expand our service area to petrochemical, oil and gas projects in Middle Eastern countries and construction projects in Southeast Asian countries. We shall combine China's supply chain advantages, manufacturing advantages and engineering advantages with world-class management experience to bring safety and efficiency to our clients. Start from China, Go abroad along the Belt and Road, Serve the whole World.

Why Choose Us

What do clients expect when choosing a scaffolding subcontractor? What they want is not tube and couplers, nor components of the system scaffold, but scaffolding structures that are erected and dismantled at the job site according to the project schedule. Deliverability, safety and cost effectiveness of the scaffolding structures built in their workplace is what they want. Being able to deliver all three values to clients at the same time is a huge challenge. Wenma rise to this challenge and build our core competencies to serve our valued clients.

Deliverability

When you issue a work ticket, you want the scaffold to be erected or dismantled immediately, we make it happen as your schedule.

Carefully Planned

Successful projects come from the systematic planning in advance and the meticulous execution of daily work.

Safety First

Our safety team is always on site with workers to ensure that their operations are in line with design and safety specifications.

Perfectly Designed

Safety and efficiency result from the perfect combination of scaffolding system, structure and construction scheme design.



Solution Contractor

Reliable Scaffolding Contractor Comprehensive and customized Solutions

Wenma's founders and its core team have more than 100 years of combined experience and expertise in safety, technology, project management and business operations in scaffolding, forming & shoring industry.

With our own design, engineering, and manufacturing capabilities, patented products, and expertise, we offer our clients comprehensive solutions and deliver value-added services along the entire value chain from scaffolding equipment design and manufacturing, scaffolding structure design and analysis, safety assessment and management to erection, dismantling, and scaffolding project management with safety, reliability and efficiency.

Innovative Equipment

Our patented scaffolding equipment serves as the fundamental pillar of safety and efficiency for our clients. We meticulously design, manufacture, and continuously innovate our equipment using state-of-the-art technology to cater to diverse projects and customized requirements of clients. Moreover, we never forget cost control that benefit our clients.

Safety Process

The safety of scaffold project is related to the quality of each component, the design of structure and load capacity as well as the behavior of each person at the job site. Therefore, systematically planning and managing every detail is the key to achieving a high level of safety performance. It's on the job site, but not just there. Working with Wenma, we take care of the whole process.

Engineering Design

Equipped with our own in-house CNAS certified laboratory and mechanical structure testing facility, our professional R&D and engineering teams are always ready there to provide you all technical related assistance, such as Statical Analysis, Shop Drawings, Assembly Drawings, Technical Documentation, Project Planning and On-site Training, etc.

Project Management

Scaffolding contracting services are not only about labor, scaffolders, or installation and dismantling, but also closely related to the success of whole project, requiring professional ability to manage and collaborate with the main contractor and other cross-operators to ensure that the project duration, quality and safety standards are met. To work with Wenma, we take care of all of that.





Scaffolding Project in Chemical, Oil & Gas Industry

Integrated Capability

WHAT CLIENTS NEED IS WHAT WE OFFER

As a professional contractor of scaffolding, forming and shoring projects, the basis of Wenma's business is our innovative Equipment system applied state-of-art technology, which consists of a series of elaborately well-designed COMPONENTS, and our business scope covers the full service chain of a project including ENGINEERING and planning and designing, EQUIPMENT supply including hire or sales plus buy-back, CONSTRUCTION including erection and dismantling and labor and technical services on the jobsite, referred to as "C+EEC" business model.

Component

By systematic design we use simple and fewer Components form complex structures to meet the customized needs of different industries to save for our clients.

Equipment

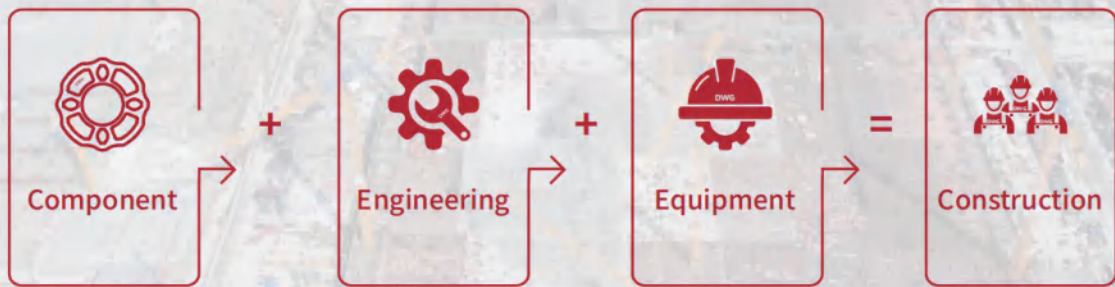
Wenma's Equipment supply chain start from material purchase, manufacturing and quality control, logistic service to every project on time, and all done by our one team.

Engineering

Professional Engineering planning and design not only better ensure the project duration, efficiency, cost savings for clients, but also the prerequisite of a safe project.

Construction

Erection, dismantling, labor, duration, safety... All require professionals and we take care of all these headaches for our clients and make them economical and safe.





Our Partners

We do not choose the clients, but the clients choose us. Because we understand them and their needs, we are willing to provide total solutions to promote safety, save their costs, and put these solutions into action.



中国中铁



中国建筑



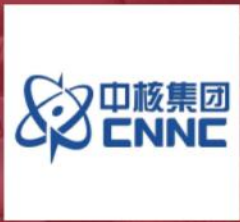
中国铁建



中国中冶



中国交建
CHINA COMMUNICATIONS CONSTRUCTION



中核集团
CNNC



中国化学工程股份有限公司
CHINA NATIONAL CHEMICAL ENGINEERING CO., LTD.



中国寰球工程公司
CHINA HUANGPU CONTRACTING & ENGINEERING CORP.



炼化工程集团
SEG

Finelock M48 System Scaffold

The scaffolding system is not just a bunch of parts and components, but a complete integrated system that meets the different customized needs of construction and industrial projects in a safe, reliable and efficient way. Our Finelock M48 is not just another kind of ringlock scaffold as well, but a brand-new-scaffolding system that integrates the cutting-edge technology in the industry by material, process and design innovations.

Guided by the mission, with its innovative spirit and extensive experience, our products are designed and built to keep scaffolders safe at all times. At the same time, our Finelock M48 modular scaffolding system is highly flexible, maintain the highest standards of durability and sustainability and is used by clients around the world for various projects.



Quick and Easy Save Man-Hour

Our Finelock M48 Rosette connection design and prefabricated component system make the assembly process quick and easy, saving time-consuming measuring work, so labor costs can be reduced by up to 70% compared to Tube and Fitting Scaffolding.



One System Infinite Application

In the real world, we may encounter various project requirements. The project may be in the construction sector, or it may be in the industrial sector. Finelock M48 is designed and prefabricated with customized components that can easily meet the needs of various applications.



High Safety Standard for Oil & Gas Industries

When you work in chemical, power plants or oil & gas industries, you are confronted with the individual requirements of the respective operator. Especially in such challenging environments, the safety of all participants always comes first. Finelock M48 ensures that you are always safe, even in demanding environments such as chemical plants or offshore areas.



"In the design of Finelock M48, we fully considered the compatibility of the product system. Not only is most of its components compatible with our Fineshore M60 Shoring System, but it is also compatible with most similar products from leading manufacturers."

Jack Wei: Chief Technology Officer/Chief Engineer

Fineshore M60 Shoring System

Imagine how many truck loads and how many tons of formwork and shoring equipment would be needed for a project of 10 million cubic meters of shoring area size? And how much temporary storage space is needed on site? The Fineshore M60 is designed to meet such challenges.

Our engineers have adopted lightweight design in the product design, taking into consideration the compatibility with Finelock M48, and most of the components can be used interchangeably, thus reducing the difficulty of project management and enhancing your investment value.



Hi-Load Capacity with Lighter Weight

By accurately balancing weight reduction and load bearing, the property of safe load capacity of 100KN per leg maximizes the functional diversity of the Fineshore M60 Shoring System, which can easily cope with various types of large-scale infrastructure projects and also meet the needs of various small-scale civil construction projects.



Reduce Time and Save Man-hours

The optimized component system helps scaffolders carry less weight and reduce their operating movements, thus lowering their workload and improving efficiency. Based on our statistics for many large infrastructure projects, the Fineshore M60 Shoring System can easily reduce the construction period by 2-3 times and save man-hour.



Shoring Tower or Large-Scale Structure

The design of the 8 directional holes on the rosette provides great convenience for assembling diagonal braces in different directions. The Fineshore M60 can be assembled into a shoring tower at will and can also be designed into a variety of complex shoring systems to cope with a variety of complex large-scale infrastructure structures.



"We applied the Fineshore M60 to the world's largest electronics factory project, where over 20,000 tons of the product were used on-site in ten months, saving more than 3 times the number of traditional products. This greatly reduced material usage and saved labor costs, shortening the construction period."

Wenma Zhang: Chief Executive Officer

Excellence By Design

START FROM 100 YEARS AGO INDUSTRY CHANGED BY INNOVATION AND DESIGN

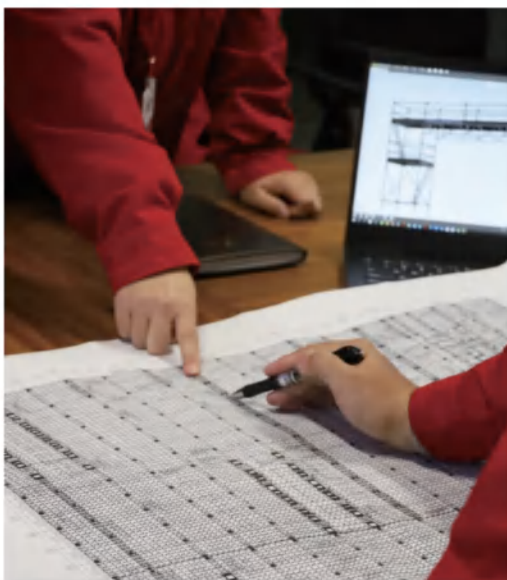
In 1913, a scaffolding revolution was about to happen. Daniel Palmer Jones and David Henry Jones from UK invented a coupling system for scaffolding which led them down a path of invention. Couplers have been designed for quick assembly and no longer rely on nuts and bolts. Modern-day scaffolding standards, practices and processes can be attributed to the two brothers.

Until they patented their inventions in the early 20th century, scaffolding was erected by individual firms with wildly varying standards and sizes. Their creations led to a standardization across the scaffolding industry. This helped to make working with scaffolding safer for all involved.

Nowadays, putting up scaffolding is becoming a bit like using an old-fashioned Meccano set, scaffolding is a regulated industry with standardized best practices used to keep those using the scaffolding safe. The performance requirements and methods of structural and general design for access and working scaffolds are covered by the European Standard, BS EN12811-1, but innovation never stop.....

Innovation never stops Design changes the world

Our R&D team innovatively designs different components to meet client needs. China's rapid modernization, the construction of the world's largest infrastructure and industrial projects over the past two decades, presents numerous technical and application challenges, as well as rich ground for a team with a sense of mission and innovation like Wenma's to grow.



Design and Manufacture All Done by Ourselves
30 years of experience in designing and manufacturing scaffolding, formwork and shoring products according to international first-class standards.

Solutions For Construction & Industrial Projects
The integrated design of Finelock M48 and Fineshore M60 systematically improves product and operational adaptability and economy.



Scaffolding Project in Chemical, Oil & Gas Industry

Quality By Know-How

We are the Experienced Team

Provides Clients with Quality Products and Services They Even Don't Know about

Although everyone claims that their products are of good quality, efficient and cost-effective, we often see many safety hazards and applications with quality defects on sites. Some of the reasons are engineering planning and design problems, safety management problems, and some are indeed product design, manufacturing process and quality management problems.

So, what are the criteria for evaluating a good scaffolding system? Quality comes from knowledge, which requires experience and comprehensive ability from scaffolding engineering application, safety, project management to product system design, manufacturing and quality control.



■ Designed & Manufactured In-House

Safety and Efficiency start from design and quality products. Our engineering and manufacturing experiences and capabilities make us different from others and empowered us a "hard mean" to provide our clients with safe and economical scaffolding products and services. Our quality management system certified by ISO9001:2015 covers all the procedures from raw material incoming inspection, process inspection and outgoing inspection.



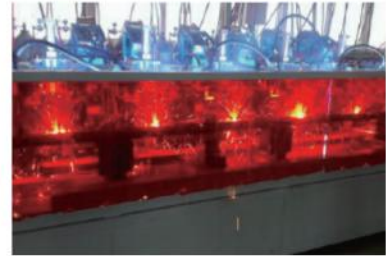
Hardness Test

Incoming inspection of raw material is the critical procedure of the quality assurance.



Flaring and Flattening Test

Incoming inspection of raw material is the critical procedure of the quality assurance.



Robotic Welding

Automatic welding process guarantees the quality consistency of millions of components.



Welding Penetration Test

Good welding penetration is one of the key quality control points of process inspection.



Zinc Thickness and Bur

It is not only about quality but also safety to check zinc thickness and no-zinc-bur in the procedure of outgoing inspection.



Dimension Error Check

Outgoing inspection procedure to guarantee all dimensions within the tolerance although controlled in production process.

Innovation By Professional

FOR LARGE-SCALE LOAD TEST MODULAR REACTION FRAME

The Modular Reaction Frame System developed by Wenma provides a systematic testing tool for the designed parameters of the shoring and scaffolding structure, such as the load capacity and stability, and provides a reliable guarantee for our R&D team to innovate in components and construction methods. The system adopts modular design and has adjustable height and loading mode. It also uses a full hydraulic digital control servo loading system, which can simulate a variety of loading modes and working conditions.

01

Up to 12m Testing Height

The modular design allows for flexible combinations, offering testing solutions for shoring towers and scaffolding birdcage structures.

02

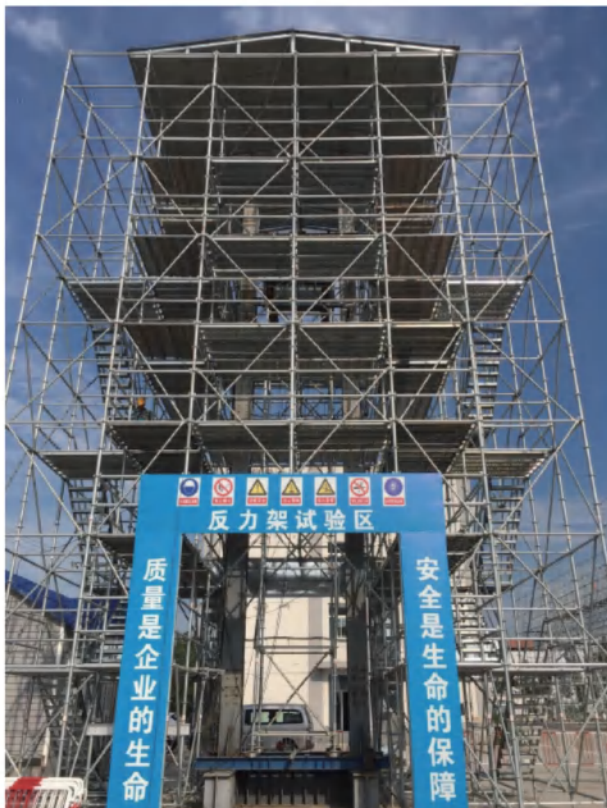
Up to 2000KN Loading

Our Full Hydraulic Digital Control Servo Loading System and the background computer are digitally integrated, enhancing the efficiency and accuracy of experiment process control and results verification.

03

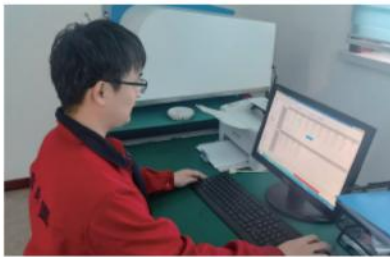
Advanced Data Acquisition

Utilizes wireless load, laser displacement, and angular displacement sensor technologies, enabling real-time wireless image monitoring, high-speed digital signal acquisition, and data analysis capabilities.



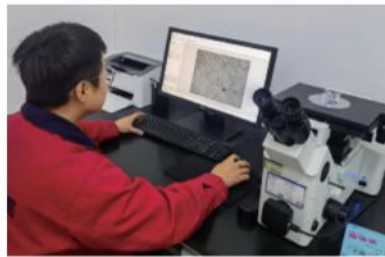
■ ILAC-MRA & CNAS Accredited Lab

Wenma's ILAC-MRA & CNAS accredited laboratory enhances the capabilities of our R&D team by providing comprehensive chemical, physical, and load capacity testing services in-house.



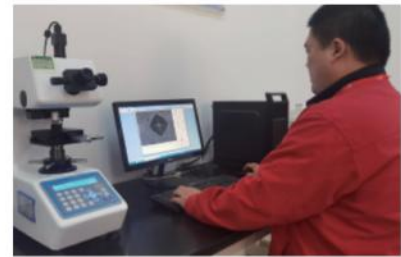
Chemical Analysis

Determines material composition & content of all chemical components



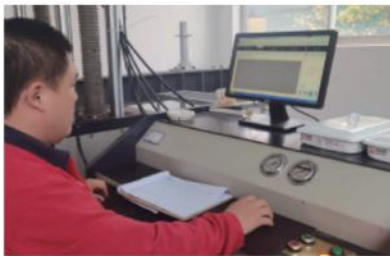
Metallography Detection

Evaluates the quality and properties of materials



Vickers Hardness Test

Reflects the differences in chemical composition, organizational structure & processing technology of materials



Room Temperature Tension Test

Determines mechanical properties & failure modes



Bending Test

Evaluates ability of metal materials to withstand bending deformation at specified bending levels



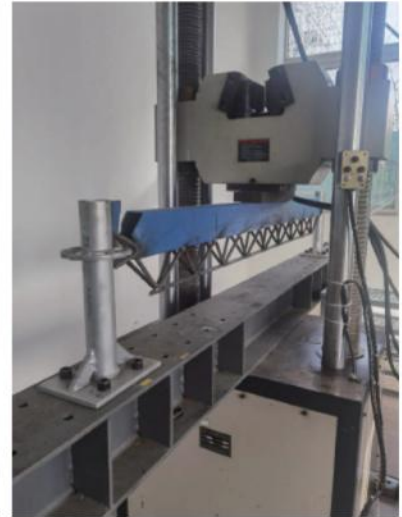
Salt Spray Test

Evaluates corrosion resistance of materials in salt spray environment

ILAC-MRA & CNAS Accredited Lab



Load Capacity Test
Base Jack and U Head Nuts



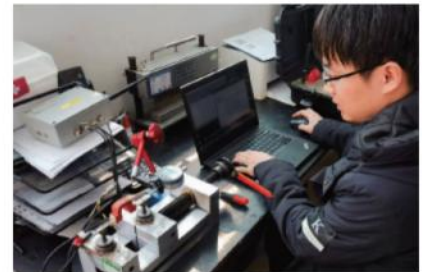
Load Capacity Test
Trussed Ledger



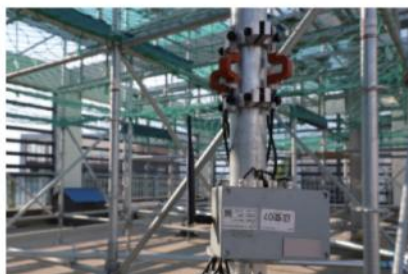
Load Capacity Test
Aluminum Beam



Load Capacity Test
Side Bracket



Strain Gauge Accuracy Test
Sensors accurately measure the deformation and stress of structures



Load Monitoring System
Detects the scaffolding or shoring structural load Real-time



Shear Strength of Welds
Check the girth weld on the inner side of Rosettes



Tensile Strength Test
Maximum tensile strength Rosettes can withstand during the stretching process

■ ILAC-MRA & CNAS Accredited Lab



Bending Tensile Strength

Maximum bending tensile strength Rosettes can withstand during the loading process



Shear Strength of Rosettes

Test of shear strength on both sides of Rosettes



Shear Strength of Rosettes

Test of shear strength on one side of Rosettes



Load Capacity Test

Base Jack and U Head

Project Cases

Over the past 10 years, we have completed more than 360 large-scale infrastructure and industrial projects of various types, including airports, high-speed rail stations, subway station complexes, viaducts, logistics centers, industrial plants facilities, commercial complexes, petrochemical and oil and gas projects, etc.

Industrial Complex
The World's largest single electronics factory –
Tianma 6th generation AMOLED production line



Logistics Center
JD smart IoT logistics Center





Railway Station & Viaduct
Shenyang South Station



Airport & Viaduct
Qingdao Jiaodong International Airport

Chemical, Oil & Gas Plants
New construction &
Shutdown maintenance



Module Plants & Shipyards
Onshore & Offshore Modules



CISRS Training Center

Proud to gain CISRS Accreditation in China

The National Access and Scaffolding Confederation (NASC) in the UK is a leading trade association in the construction industry, dedicated to elevating standards and practices within the scaffolding sector. Under its umbrella, the Construction Industry Scaffolders Record Scheme (CISRS) is a widely recognized training and certification program that aims to ensure all personnel involved in scaffolding operations possess the necessary skills, knowledge, and safety awareness to guarantee workplace safety and efficiency.

This program is now also accessible globally through the CISRS Overseas Scaffer Training Scheme (OSTS). The CISRS OSTS encompasses a comprehensive range of knowledge and skills from Scaffer Level 1 for beginners to Advanced Scaffolders Level 4, also provides Basic and Advanced Scaffolding Inspection training and Scaffolding Supervisor training. It covers, but is not limited to, crucial aspects such as scaffolding erection, inspection, usage, and dismantling. The program emphasizes a combination of theory and practice, ensuring that each trainee not only grasps theoretical foundations but can also apply this knowledge in real-world situations. Training courses are conducted by certified training centers and experienced instructors, ensuring the course content remains aligned with industry standards and regulations.

Wenma is the first and only CISRS OSTS accredited training center in China, offering CISRS training courses for **Scaffer Level 1** and **Scaffer Level 2**, **Basic Scaffold Inspector**, and **Scaffold Supervisor**.



ENGLISH & CHINESE INSTRUCTORS

TAILORED TO SUIT THE SPECIFIC NEEDS

Whilst regulations may differ from country to country, all employers have legal duties to ensure that scaffolders are adequately trained in the work equipment they use. The training provided by the CISRS Overseas Scaffolder Training Scheme (OSTS), is based directly on the CISRS UK Scheme, but has been tailored to suit the specific needs and requirements of the overseas scaffolding and access industry.

Additional to meeting the OSTS scheme criteria, training providers must fully comply with local legislation, trade licensing and seek all necessary approvals for the delivery of training and education in each country. The main features of CISRS OSTS training are:

Hands-on Practice A strong emphasis is	Personal Protective Equipmen	Contextual Learning Adopting a contextual	Continuous Development
placed on practical exercises, with trainees learning to correctly erect and inspect scaffolding under controlled conditions that simulate actual work environments, ensuring proficiency in safe operating procedures.	Both trainers and trainees are rigorously required to wear PPE, including safety helmets, harnesses, fall protection equipment, and appropriate protective clothing. This mandate surpasses legal compliance, instilling fundamental safety habits.	teaching approach through case analyses, accident simulations, etc. fosters a deep understanding among learners of the severe consequences resulting from non-adherence to safety protocols, enhancing safety consciousness and promoting a culture of safety.	The CISRS system encourages ongoing learning and professional development, mandating periodic refresher courses and update training for cardholders. This ensures skills and knowledge remain current.

Rigorous as CISRS UK Centers

AUDIT PROCESSES

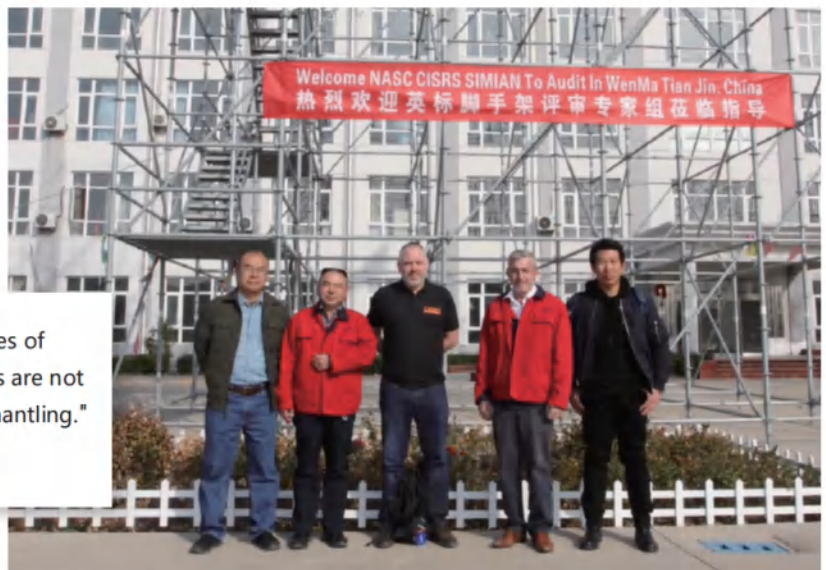
CISRS OSTS is based upon the same tried and tested principles as the UK scheme of formal training and assessment and includes practical, theoretical and health and safety sessions coupled with onsite time served experience. CISRS OSTS centers undertake the same rigorous audit processes as UK CISRS centers to maintain CISRS accreditation.


Mr. Dave Mosley, CISRS MD visited our training center in 2018

Mr. Ian Fyall, Simian Skills owner visited our training center in 2018

"CISRS training teaches us to save the lives of scaffolders first, because safety guardrails are not ready in the process of erection and dismantling."

Andrew Sharp, CISRS Senior Instructor





Finelock M48 Course Covered by CISRS

System Scaffold Training

The 2 Day CISRS System Scaffolding Product Training Scheme (SSPTS) recognizes the significant differences between the system scaffold products and tube and fittings. It also provides structured training in system scaffold products for operatives who had previously only received training in tube and fittings. The scheme provides scaffolders with the skills and knowledge for the safe use of the system scaffold product, in accordance with the manufacturer's instructions. These courses are only available to CISRS card holders who have successfully completed a minimum of CISRS Part 1 training or to those looking to renew a CISRS BASE Card.

The System Scaffold Product Inspection courses include a theory test based on general inspection and specific system product knowledge as well as a practical exam based on a drawing of the structure and faults provided by the manufacturer/supplier. CISRS Scaffolders & Advanced card holders with a relevant SSPTS endorsement will have gained product knowledge through their training and would be deemed competent to carry out inspections in the endorsed product, or again in the same category, provided they are aware of the differences in product capability.

Safety Advisory Board

To implement world-class safety standards and best practices, we have established a Safety Advisory Board under our Board of Directors and have engaged internationally renowned safety experts to advise on our QHSE management.



Howard Liu
Chairman of the Board



Robert Tilley
Global HSE Consultant



Ian Fyall
Simian Risk Group



Glenn Guo
Safety Director



Hong Chen
Scaffolding Safety Expert



Yun Luo
Professor/Doctorial Tutor

Robert Tilley

Perhaps most impressive of all is Wenma leadership's absolute dedication to the culture of safety. The company has created an environment where safety is not just a priority, but away of life. Every worker at Wenma understands the importance of safety and takes it seriously.

Ian Fyall

Wenma is doing an amazing job. I really like the way they are understanding and taking in European & British safety regulations around scaffolding. I always look all the large projects they are doing and think "Vow", because I do see a lot of large projects but never on the scale like they are in China.

Yun Luo

Scientific management, full participation, Wenma attaches great importance to the safety of production and the occupational health of its workers, and has made great efforts. As Wenma's Safety Advisor my experience is very profound to work with the excellent team.

Three Golden Rules

Wenma Three Golden Rules

The Wenma Golden Rules of our Health and Safety Policy are about changing how we act. If we want to further improve our HSE performance, these three rules provide a framework for how we must behave at all times, in all operations and activities. The thinking behind the rules is well established in many of our HSE plans and procedures. We must apply the rules to everything we do, every day, in every activity and in every project. No matter what pressure we face, the golden Rules always come first.

These three golden rules make it clear how Wenma employees, suppliers and contractors are expected to behave.

The Golden Rules emphasize our individual responsibility while encouraging us to help our colleagues and respect our other partners. For example, The rules encourage us to get involved and to take corrective action if we see someone breaking the rules. And The rules help us to understand why others step in to help if we are failing to comply. The rules are there to motivate us all to do the right thing, from the most senior to the most junior member of staff.

You and I:

- Comply with the laws, regulations, standards and procedures of governments, clients, general contractors or project owners.
- Intervene in unsafe or non-compliant situations.
- Respect our co-workers and partners, start with me, always watch and help others.



Ten Safety Philosophy



Ten Safety Philosophy

1. All Injuries are Preventable

Although knowledge of Ten Safety Philosophy is necessary to the development of a safety system that works, but employees' knowledge and understanding of it are as important as any other part of the program.

2. Can Be Controlled

All operating exposures that could result in injuries or occupational illnesses can be controlled.

3. Management

All levels of management, from top to junior, are involved in safety management and accountable for performance.

4. All Participate

A safety culture in which all employees participate is the key to achieving excellent safety performance.

5. Employment

Safety is a condition of employment.

6. Must be Trained

All employees must be trained to work safely.

7. Inside or Outside

Safety is important both inside and outside the workplace.

8. Corrected

All safety hazards and system deficiencies discovered must be corrected promptly.

9. Regularly Audit

Management must regularly audit workplace safety performance to assess safety program success.

10. Business Success

Safety creates value, profit and core competencies for the business success.

Wenma HSE Policy

COMMITMENT

Wenma is committed to being an industry leader in Occupational Health, Safety and Environmental practices, to maintaining a safe and healthy workplace for our people and our partners, to developing our products and services consistent with these aims, and to comply with all HSE rules and procedures of the Client's work site. Get all the workers home safely, everyone working for Wenma is expected to share this commitment by taking care of themselves, looking out for others, and protecting the environment. Wenma leadership is committed to supporting this policy with the resources and accountability necessary to achieve this policy.

OBJECTIVES

1. Minimize hazards to the people, properties and the environment in the workplace. Protect all personnel from injury, protect the properties of the Company and clients from loss, and protect the environment from pollution and damage.
2. Continuous pursuit of excellence in HSE solutions.
3. Zero accident.



SCOPE

The Policy applies to all business operations of Wenma, including product design, manufacturing, quality management and project planning, design, construction and operation at all stages. All directors, management at all levels and all prospective and current employees of Wenma, as well as volunteers, contractors and consultants, must comply with the Policy as well as other policies, guidelines and codes related to health and safety.

Breach of the Policy

Operating divisions with higher health and safety risks must comply with applicable industry standards and guidelines. When conducting business for the Company locally or in other jurisdictions, all employees must comply with local/national laws and regulations, as well as any other applicable laws and regulations.

Breaches of this policy can result in remedial, corrective, or disciplinary actions up to and including termination of employment and criminal prosecution. In addition, if laws are violated, employees or the Company may be subject to criminal penalties (fines or jail time) or civil sanctions (damage awards or fines). Wenma could also lose government contracting privileges.

Actual or suspected incidents of misconduct should be reported to the HSE Office at hseoffice@iwenma.com. The Company guarantees non-retaliation and confidentiality, to the extent legally possible, for good-faith reports of such breaches.



Safety Training



Roles, Accountabilities and Responsibilities

Each Individual Personnel, including employees, contract workers, visitors, and employees of subcontractors at the company's workplace, must understand the Company's Safety Policy and related arrangements.

All personnel are Responsible for:

1. Taking reasonable care to protect their health and safety, the health and safety of other workers and / or anyone exposed to construction activities at the workplace;
2. Complying with and performing work activities according to this Safety Policy and relevant safety standards, programs, procedures and practices;
3. Reporting all unsafe practices or hazardous conditions (including any defects in any equipment or protective device), near-miss and incidents to their supervisor or to the Wenma Authorized Representative;
4. Using and maintaining designated safety and Personal Protective Equipment as required;
5. Participating in the company's safety training and, upon passing the exam, will be eligible to obtain a certificate for employment;
6. Asking their supervisor or the Wenma Authorized Representative for clarification and direction when unsure or about a specific job or work task;
7. Co-operating with the Company on all matters regarding health, safety and welfare.

All personnel have the:

1. Right, responsibility and obligation to refuse and report work they consider imminently dangerous to the environment, property, personnel or the general public;
2. Right to know what the workplace health and safety hazards are, appropriate precautions to take, and procedures to follow in the event of an incident;
3. Right to participate in the worksite health and safety program; and, Right to protection from retaliation for exercising their rights.

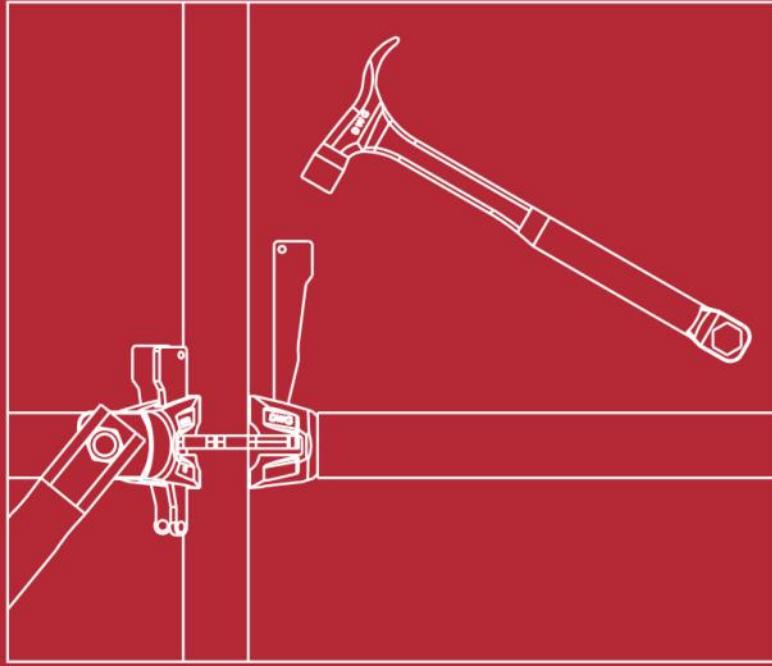
Help Us to Build a Better and Safe World

If you have any safety concern about our products or services, please do not hesitate to contact our HSE Office at hseoffice@iwenma.com immediately.



Scaffolding Project in Chemical, Oil & Gas Industry

- > 必须定期
- 检
- 地
- 扣
- 安
- 是
- > 脚手架
- > 脚手架
- > 脚手架
- > 必须使
- > 严禁爬
- > 严禁带
- > 上下脚
- > 所有物
- > 移动脚
- > 严禁在
- > 脚手架
- > 不能用
- > 任何损
- > 脚手架
- > 所有物



Finelock M48 System Scaffold

Independently tested and met or exceeded the criteria for Quality, Technical Specification and Compliance to EN12810/EN12811:2004 and JGJ/T-231 & JG/T-503.



EDITION 01 | 2023.11

Headquarter

Wenma Forming and Shoring Co., Ltd.
E2-16, Binhai International Business Park
199 Haiyuan Road, Binhai New Area,
Tianjin 300451, P.R. of China
+86-22-25646163
info@iwenma.cn
www.iwenma.cn

Wenma Scaffolding Solutions Co., Ltd.
E2-16, Binhai International Business Park,
199 Haiyuan Road, Binhai New Area,
Tianjin 300451, P.R. of China
+86-22-25646163
info@iwenma.com
www.iwenma.com

Hong Kong

Wenma Scaffolding Solutions Hong Kong Limited
Room 06, 13A/F., South Tower, World Finance
Centre, Harbor City, 17 Canton Road, Tsim Sha Tsui,
Kowloon, Hong Kong
info@iwenma.com
www.iwenma.com

Hong Kong

Wenma Forming & Scaffolding (H.K.) Limited
Room 1027, 10/F, Tower A, Southmark,
11 Yip Hing Street, Wong Chuk Hang, Hong Kong
+852-2856-1234
+852-9199-9158
info@iwenma.com
www.iwenma.com

Qatar

Wenma Scaffolding Solutions and Services W.L.L.
Regus, Doha Bank Street, Office 201,
Blue Tower, Sword Signal, Bank Street
PO Box 55918, Doha, Qatar
info@iwenma.com
www.iwenma.com

Saudi Arabia

Wenma Scaffolding Co., Ltd.
Building 4294, Al khaliq Rd, 7943 Az Zhuhur Dist.,
32423 Office 12 Dammam city, Saudi Arabia
info@iwenma.com
www.iwenma.com